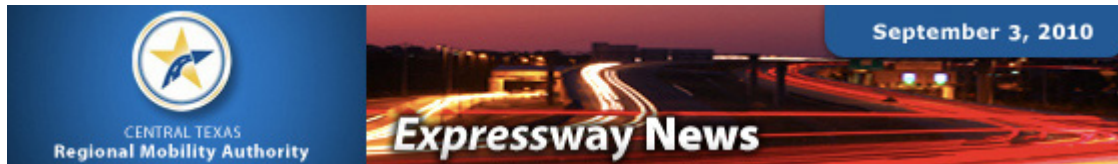


Having trouble reading this email? [Click here for a web version](#)



TxTag



Learn more, sign up or manage your account [here](#).

In the Spotlight

State and Local Officials Announce Beginning of MoPac Improvement Project

On July 8th, state and local officials announced the beginning of a MoPac corridor study to determine the best options for improving mobility.



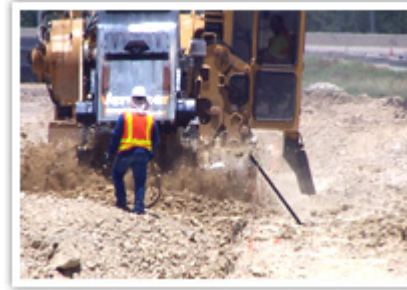
One of the options being considered would involve expanding the capacity of the existing roadway by possibly adding one Express Lane in each direction between Parmer Lane and Cesar Chavez Street in downtown Austin with a transition back to the existing facility south of Lady Bird Lake. This option would also consider connections from the Express Lanes to downtown Austin, as well as the construction of sound walls to reduce noise in nearby neighborhoods.

The Express Lanes would be designed to provide un-tolled, free-flowing travel to public transit buses and registered vanpools, enhancing the reliability of service provided to customers. To maximize use of the lanes, individual drivers would also have the option to use them if they choose to pay a toll. The toll rates would be adjusted up or down depending on traffic levels to prevent the Express Lanes from becoming congested. The same number of existing lanes will remain

183A News

Construction Continues on 183A Extension

Construction continues on the five-mile, northern extension of the 183A toll road in Williamson County. The Mobility Authority broke ground on the project in March, and crews have been busy in recent weeks constructing bridge support structures and water detention ponds. Significant progress has been made on the intersection bridges, and crews are casting retaining walls. Substantial excavation work has also occurred in the depressed underpass behind the Blockhouse Creek neighborhood. Once completed, the [improved Scottsdale Drive intersection](#) will include sidewalks and Texas turnarounds and cross over the new 183A main lanes.



For project updates or to view photos of construction progress visit www.183A.com. If you have questions regarding the project, call our project hotline at 512-684-3256.

Funding Approved for Bridge Linking 183A Path with Brushy Creek Trail

Plans to design and construct a pedestrian bridge connecting the 183A Shared Use Path with Williamson County's South Brushy Creek Regional Trail took another step forward earlier this month when the Texas Transportation Commission approved supplemental funding for the project.

The bridge will provide pedestrian and bicycle access for those traveling in Cedar Park, Leander and Austin's Avery Ranch neighborhood. Construction on the bridge is expected to begin in 2012. The project is the result of a partnership between the Central Texas Regional Mobility Authority and Williamson County, both of which have contributed \$65,000 to fund the project.

"This bridge and the partnerships behind it represent a huge win for mobility and quality of life for the citizens of our region," said Mobility Authority Executive Director Mike Heiligenstein. "This bridge and the 183A bike and pedestrian path will connect and extend the regional trail network, providing safe access and travel from residential areas to schools, employment, entertainment and shopping. We are excited to bring this project online and appreciate the support and participation of partners in helping make this a reality."

Construction on the 183A bicycle and pedestrian path began in spring of this year. The first phase will run from South Brushy Creek to FM 1431. Once completed, the 10.3-mile path will run from the north bank of South Brushy Creek and extend northward to the San Gabriel River.

Manor Expressway News

available for general use.

The study has the backing of the Central Texas Regional Mobility Authority, the Texas Department of Transportation (TxDOT), the City of Austin and Capitol Metro, who came together at the urging of the community, as well as state and local leaders. As part of the study, the community will be invited to review the proposed solutions in detail and share their preferences.

[Click here](#) to download a news release with more information.

HERO Patrol Services Along IH 35 Beginning Sept. 20th

Highway Emergency Response Operation (HERO) patrol services will begin in September along a 32-mile segment of IH 35 between Buda and Round Rock. The program will be implemented and overseen by the Mobility Authority in conjunction with TxDOT and the Texas Transportation Institute. HERO patrol trucks will soon be seen along IH 35 providing roadside assistance for vehicle breakdowns, incident management and traffic control following accidents, and facilitating debris removal and clean-up.

The HERO program is being funded under the American Recovery and Reinvestment Act of 2009 (ARRA). The program is expected to mitigate traffic congestion and improve safety along IH-35 in Central Texas.

In The News

Agencies Partner on Key Regional Transportation Projects

Earlier this month, leaders from the Central Texas Regional Mobility Authority, Texas Department of Transportation, Capital Metro, City of Austin and the Capital Area Metropolitan Planning Organization jointly issued an article regarding their combined efforts to address Central Texas' mobility needs through collaboration on key regional transportation projects.

Webcam Gives Public Around the Clock View of Manor Expressway Construction



A unique, high definition construction camera is giving Central Texans and Internet users worldwide the ability to watch construction of the Manor Expressway project in near real time. The portable, remote controlled camera, which runs on solar power and communicates via a cellular data connection, is being used by the Mobility Authority to document construction of the Manor Expressway interchange at US 183. As an added bonus, the public can view the most recent pictures, monitor traffic conditions or access thousands of archived pictures dating back to the beginning of the construction project at www.ManorExpressway.com.

"The Mobility Authority is excited to introduce this technology to Central Texas," says Steve Pustelnyk, Director of Communications for the Mobility Authority. "Transparency is a priority for our agency, and this camera allows the public to watch our progress on the Manor Expressway any time, night or day."

Click [here](#) to access images from the construction camera.

Update on Manor Expressway Construction

The Mobility Authority continues to make progress on the Manor Expressway direct connect flyovers at US 183 and US 290. Construction crews have been focusing their efforts on drilling shafts for bridge support columns. Columns can now be seen emerging from the ground. Next steps will include capping these columns and placing beams. Crews have also been placing embankment and constructing drainage structures. Due to the limited space in the intersection, construction has required the temporary closure of the northbound US 183 Cameron Road exit. That exit is expected to reopen in September. Construction has also required the temporary closure of the southbound US 183 entrance ramp at US 290. The entrance ramp is expected to reopen by December 2010. To stay up to date on road closures and other construction activities, visit www.ManorExpressway.com or call our project hotline at 512-684-3252.

Click [here](#) to view full article.

Quick Contact



Phone
(512) 996-9778

Fax
(512) 996-9784



Address
301 Congress
Ave.
Suite 650
Austin, TX 78701

Email
info@ctrma.org



Temporary Ramp Closures

Construction of the Manor Expressway direct connect flyover interchange at US 183 and US 290 began in March.

Next Phase of Manor Expressway Project Moving Forward

As construction on Phase 1 of the Manor Expressway progresses, the Mobility Authority is also accelerating plans for development of the remainder of the project. In June, the Mobility Authority initiated a process to secure a contractor to design and build the remainder of the project. That work will extend the Manor Expressway from US183 to east of Parmer Lane.

Once completed, the Manor Expressway will be a 6.2-mile, limited-access toll road with three lanes in each direction. It will be constructed in an expanded median of US 290. The existing US 290 will be improved and will remain non-tolled. Construction of the full project should be completed by 2014.

Visit the [project website](#) for more information.

You received this email because you are on our mailing list or a friend has forwarded this email to you.

[Click here to forward to a friend.](#)

If you wish to no longer receive these newsletters, [you may click here to unsubscribe.](#)

Sender: Central Texas Regional Mobility Authority, 301 Congress Avenue, Suite 650, Austin, TX, 78701